



BSF

BEAM-COLUMN, BEAM-BEAM AND BEAM-WALL.

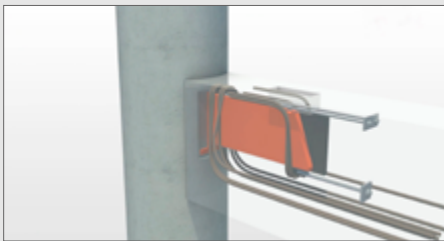


BSF connections

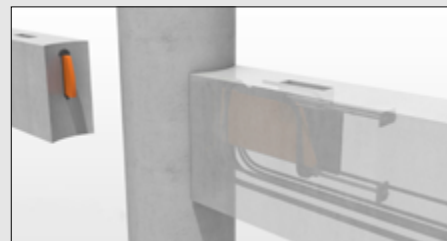
IC Beam-column connections; BSF provides clean and elegant solutions.

Benefits of using BSF:

- Columns without corbels/supports, freedom to design.
- Economical by beam-beam connections and Gerber connections.
- Simple form works by multiple beams onto a column.
- Adaptable angles.
- Can use double connections.
- Elegant solution for round columns.
- CE mark/ETA approval.
- Load from beam transmitted to the inside of the column.
- Simple and safe to erect on site.
- Simple fire protection.



BSF provides an efficient and elegant solution to connect beams to circular columns.



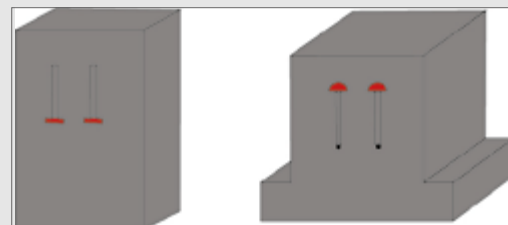
T-connection of the secondary beam to main beam.



Beam to beam; Gerber connection.



Adaptable angles.



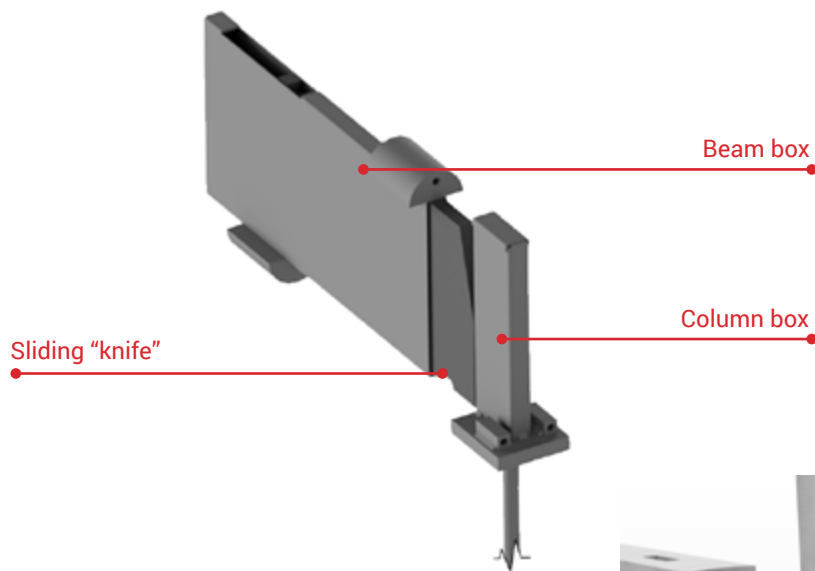
As an alternative to one large connection, BSF also can be used in pairs to achieve great vertical load capacity.

BSF Connections

Beam box ; This is cast into the beam which is being supported.

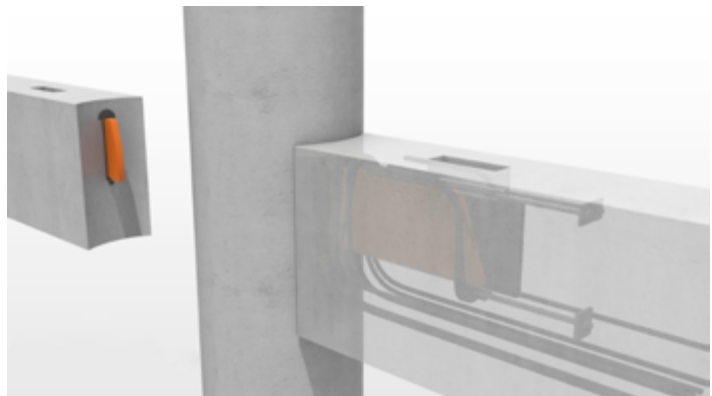
Column box; This is cast into the column, or secondary beam.

Sliding "knife"; This solid steel member actually carries the load from one member to another.



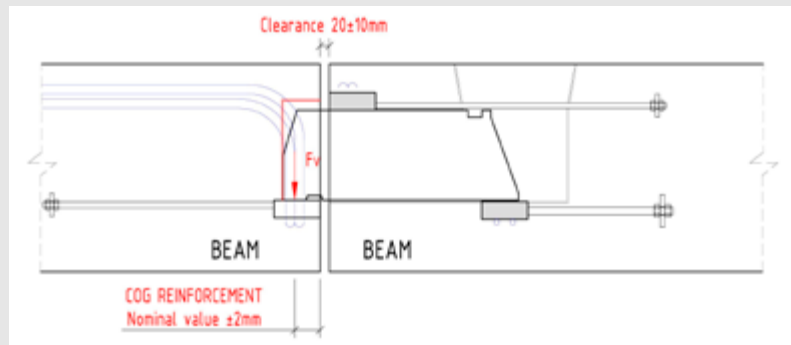
The system have individual capacities ranging from 225 kN to 700 kN.

By optionally using BSF connectors in pairs, loads of up to 1400 kN can be catered for.



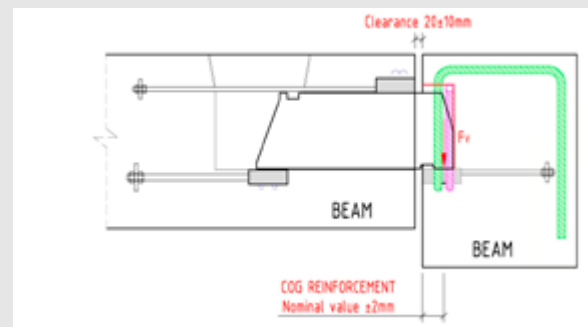
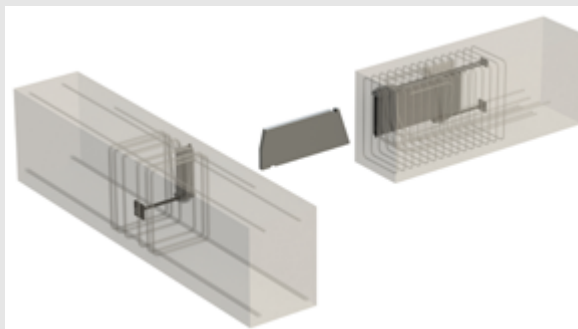
Unit	Description	Capacity	Min Beam dimension
BSF 225	Beam Column Connection	225	190 x 370
BSF 300	Beam Column Connection	300	190 x 420
BSF 450	Beam Column Connection	450	190 x 440
BSF 700	Beam Column Connection	700	310 x 500
BSF 450 x 2	Beam Column Connection	900	350 x 440
BSF 700 x 2	Beam Column Connection	1400	600 x 500

Beam - beam, cantilever



For more information, see memo 525 at WWW.INVISIBLECONNECTIONS.NO

Beam - beam and T-connections



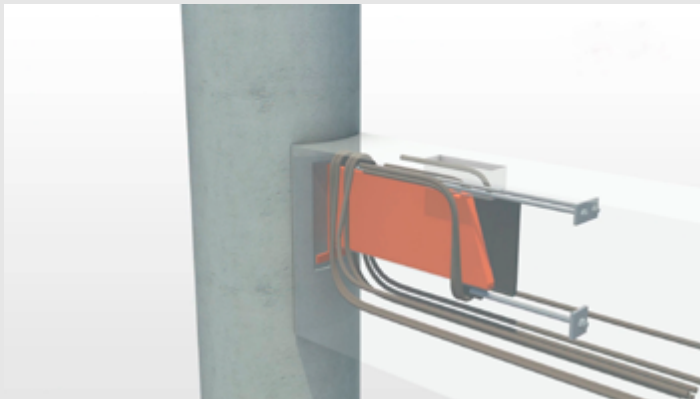
For more information, see memo 526 at WWW.INVISIBLECONNECTIONS.NO

CE Mark / ETA approved product

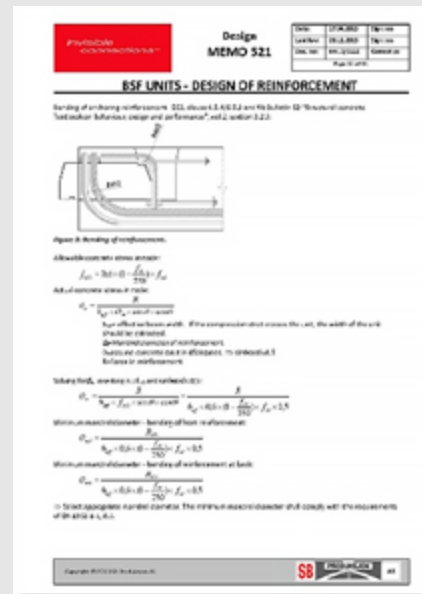


The BSF connections are CE marked and ETA approved

Standard reinforcement



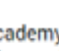
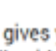
Standard reinforcement, see MEMO 521-527 at WWW.INVISIBLECONNECTIONS.NO

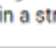
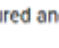
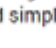

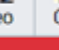


IC Academy

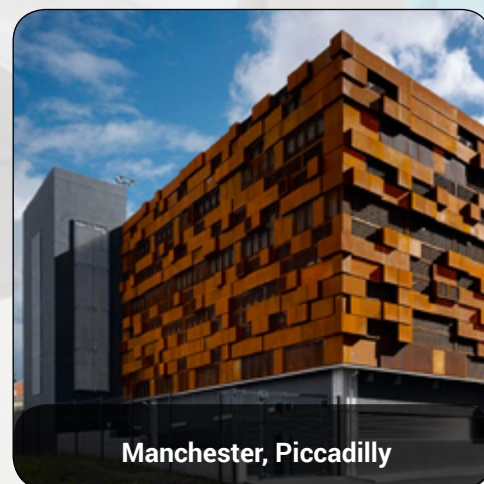
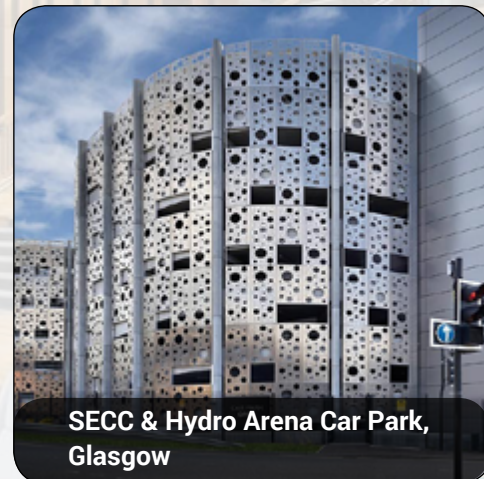
IC Academy

The IC Academy gives you a fast and easy guide to the IC products by using 3D movies. The academy will guide architects, engineers, designers, precasters and contractors through all our products in a structured and simple way.

Product segment	Architect	Engineer	Prefabrication	Installation
Stairs				
Beam column				
DT Connections				

References





Invisible Connections AS
Øran Vest
NO-6300 Åndalsnes
Tlf: +47 71 22 44 70
E-post: post@invisibleconnections.no

freedom to create

www.invisibleconnections.no